

3.6V Li-SOCl₂ Battery with HPC ER34615+HPC1550-L

FOR HIGH PULSE CURRENT

ER34615 Electrical characteristics

Nominal capacity

At 23±2°C discharge at constant current 2.0mA until 2.0V cut off,
Battery capacity depending on temperature and discharge
currents and cutoff voltage changes. **19000mAh**

Nominal voltage

Micro-current discharge platform voltage reference values
has to do with battery chemistry system and has nothing to
do with the battery model. **3.6V**

Open circuit voltage

The voltage between positive and negative while the current
is open. **≥3.65V**

Maximum continuous current

At 23±2°C the battery can discharge at least the max conti-
nuous discharge value which rated capacity 50% can permit. **230mA**

Maximum pulse discharge current

At 23±2°C, battery discharge duration for 3 seconds and stand
27 seconds, it can discharge at least the max pulse discharge
value which rated capacity 50% can permit. **400mA**

Storage condition

Stored the battery under recommends condition to make sure
effectively battery's performance, the storage temperature or
humidity too high will increase battery's self-discharge rate
and reduce battery's storage life. **≤30°C**
≤75%RH

Operating temperature

Exceed the operating temperature range could lead to battery
operating voltage reduction or even a security risk. **-55~+85°C**

Outline dimension

Finished Single cells' standard size **34.2×61.5mm**

Weight

Finished Single cells' max weight **108.0g**

Self-discharge rate

Out of the recommended condition, the self-discharge rate
may increase. **1%**

Key features



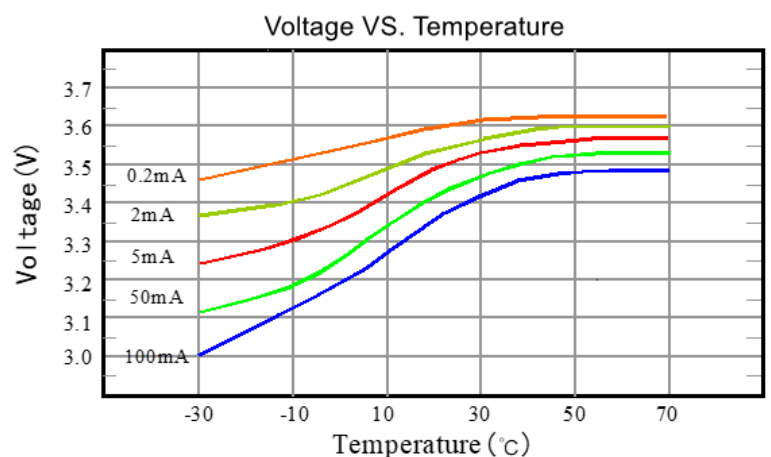
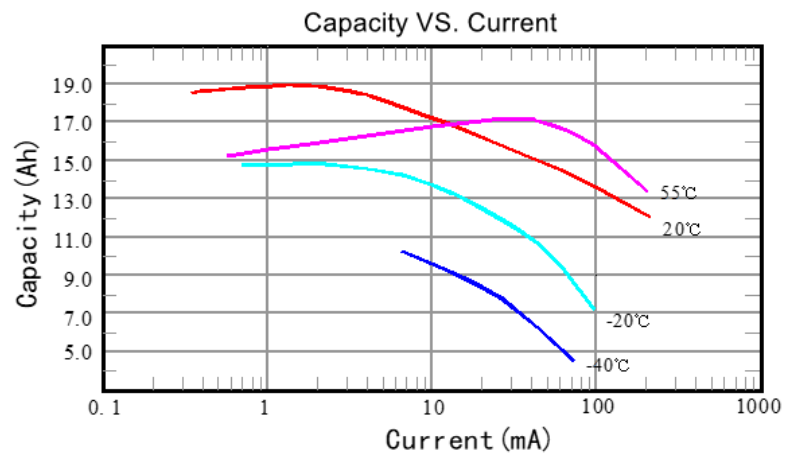
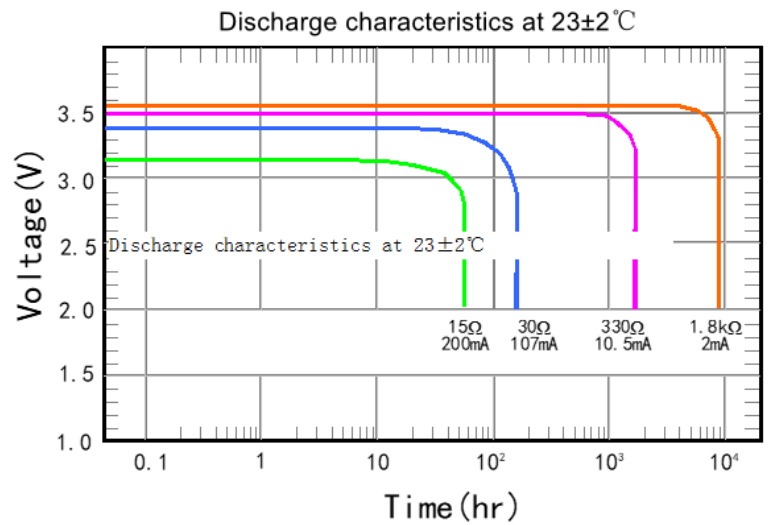
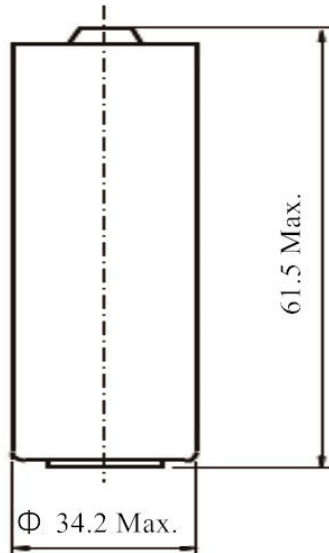
- High Energy Density
- High single cell voltage
- Light weight
- High security
- Stable operating voltage
- Wide Operating temperature range
- Low Self-discharge rate
- UN38.3 and ROHS Compliance

Main applications



- Intelligent instruments
- Safe alarm system
- Signal lights and the post indicator transfer
- back-up record power
- Medical equipment
- Wireless and other military equipment
- Active RFID
- Tyre pressure testing system
- GPS system
- GSM system

ER34615 Dimension



Warning



- Do not connect the positive and negative terminals of the battery.
- Do not place battery into fire
- Do not weld directly battery long time.
- Do not recharge battery.
- Do not force-discharge.
- Do not combine batteries in series or parallel by oneself.
- Do not reverse the positive and negative terminals
- Do not swallow.
- Do not discard.
- Stop immediately use it when serious heating or leakage.
- Before using our products, please read the manual Carefully or contact our Technician.

ER34615+HPC1550

Electrical characteristics

(23±2°C)

Capacity to 2.5V (@500mA@1% duty cycle) **19000mAh**

Nominal voltage **3.6V**

Maximum 1 second pulse to 2.5V **3000mA**

Maximum pulse length @500mA to 2.5V **1000sec**

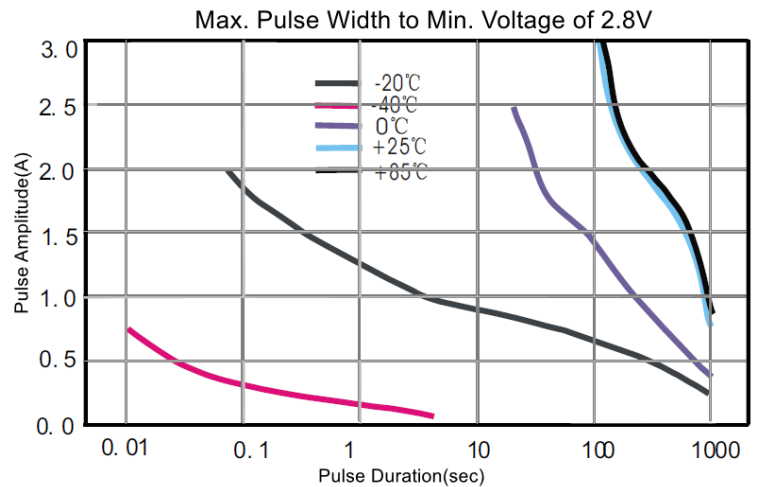
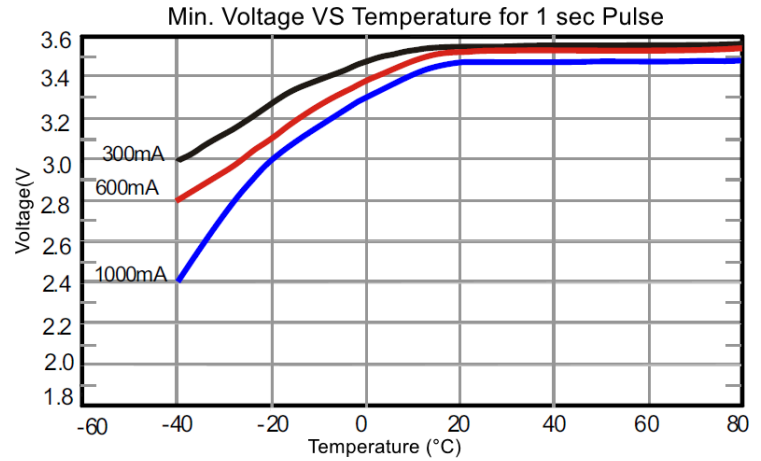
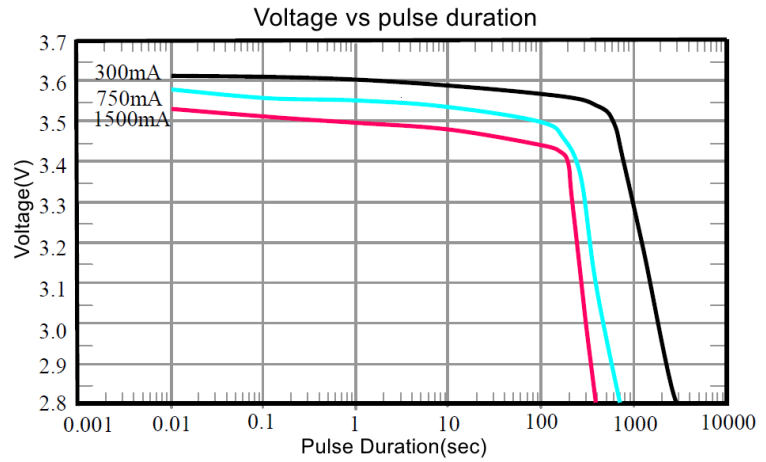
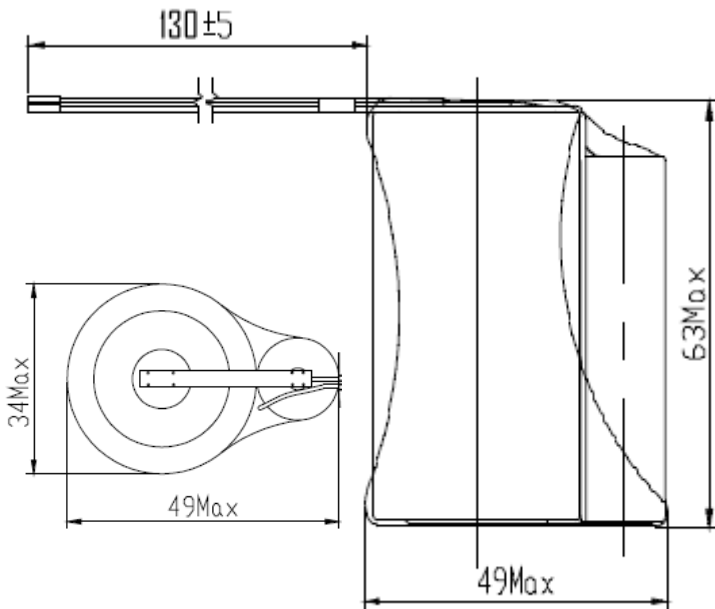
Delay time to 3.0V @ 500mA **no delay**

Weight **140g**

Operating temperature range **-40~+85°C**

Capacity retention after 10 years **96%**

Battery Pack Dimension



Please consult with Akku Tronics for further information.