



— Professional Battery Manufacturer —

The Right Lithium Battery Solution



Akku Tronics



LinkedIn

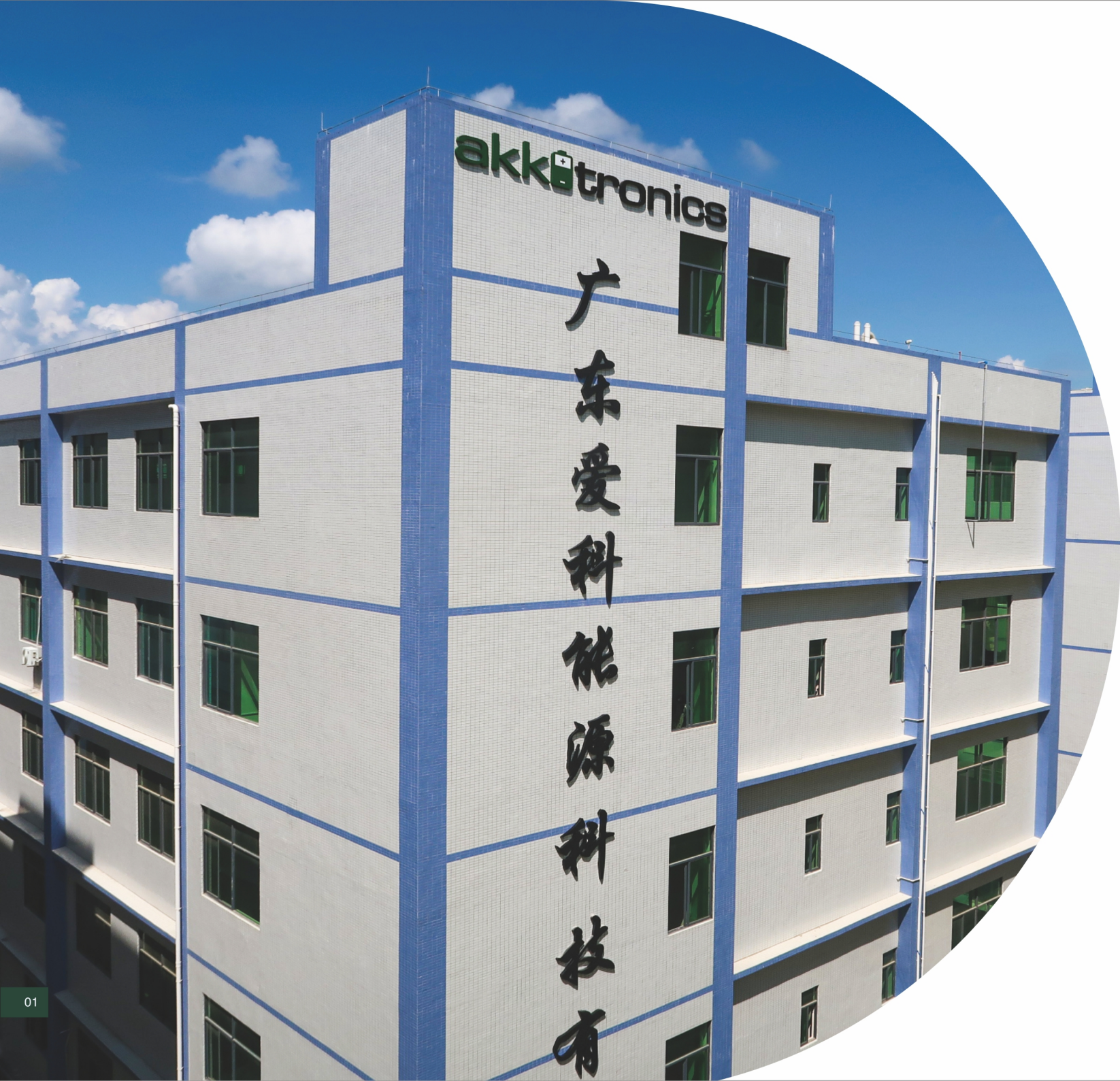
5/F., Huichao Bldg, Yintian Industrial Area,
4008 Bao'an Avenue, Shenzhen, China.

+86-755-85290393 info@akkutronics.com

www.akkutronics.com



LITHIUM BATTERY



Company Profile

AkkuTronics New Energy Technology Co., Ltd., founded in 2009, is dedicated in research and manufacture of lithium primary & rechargeable batteries and battery packs. It covers an area of nearly 20,000 square meters and employs over 700 employees, with more than 40 experienced researchers and technicians and becomes one of the most innovative lithium battery manufactures in the industry.

With years of battery engineering and design experience, AkkuTronics provides customers with effective & efficient battery solutions. AkkuTronics has a proven reputation with a broad customer base for the supply of high safety batteries, battery packs and customized batteries.

Our dedicated in-house team will design, build and supply you the most advanced range of batteries supported with the reassurance of first class quality standards. AkkuTronics' goal is to provide reliable and quality products at competitive pricing to its business partners. AkkuTronics is your trustworthy partner which you can rely on.



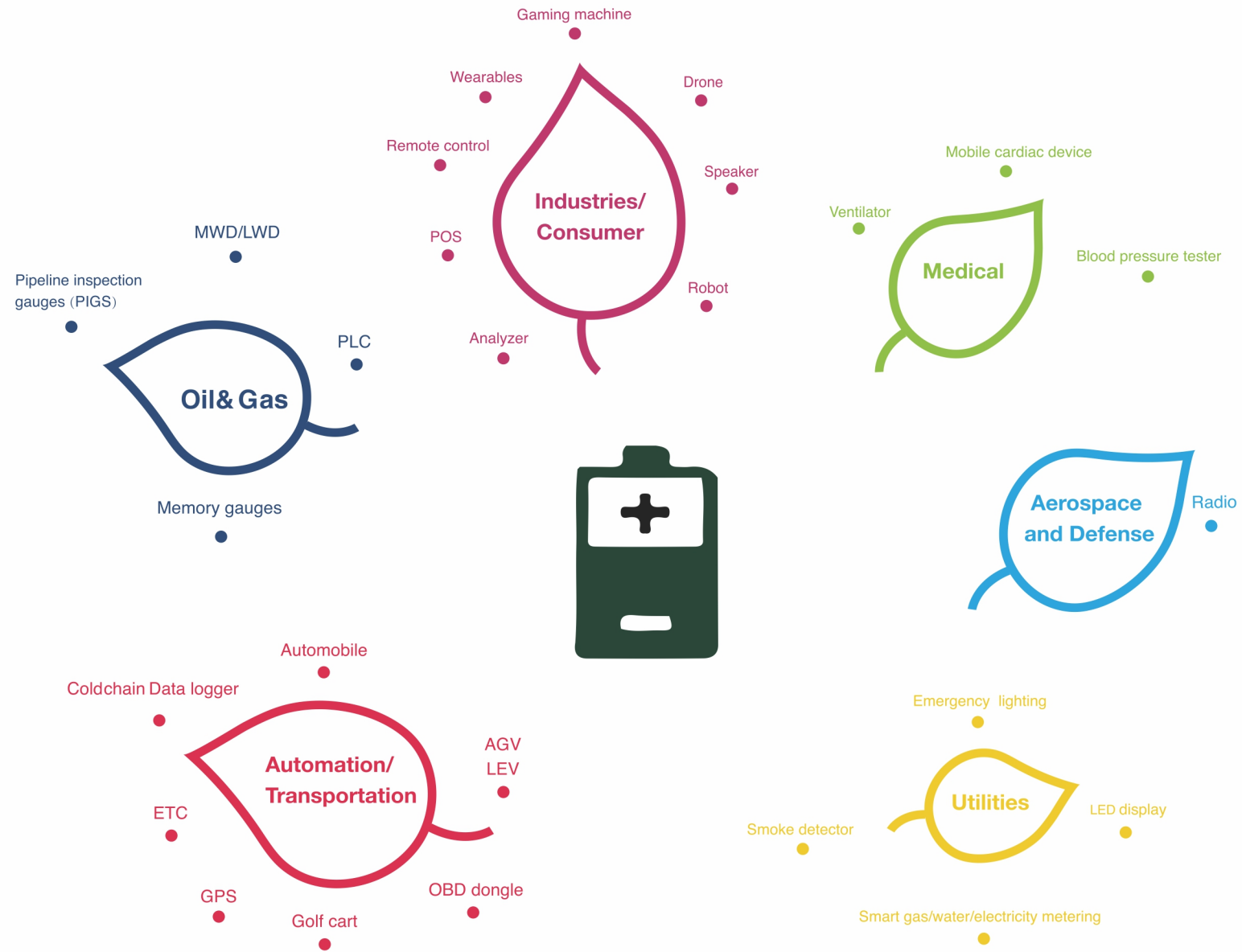
RoHS

CE

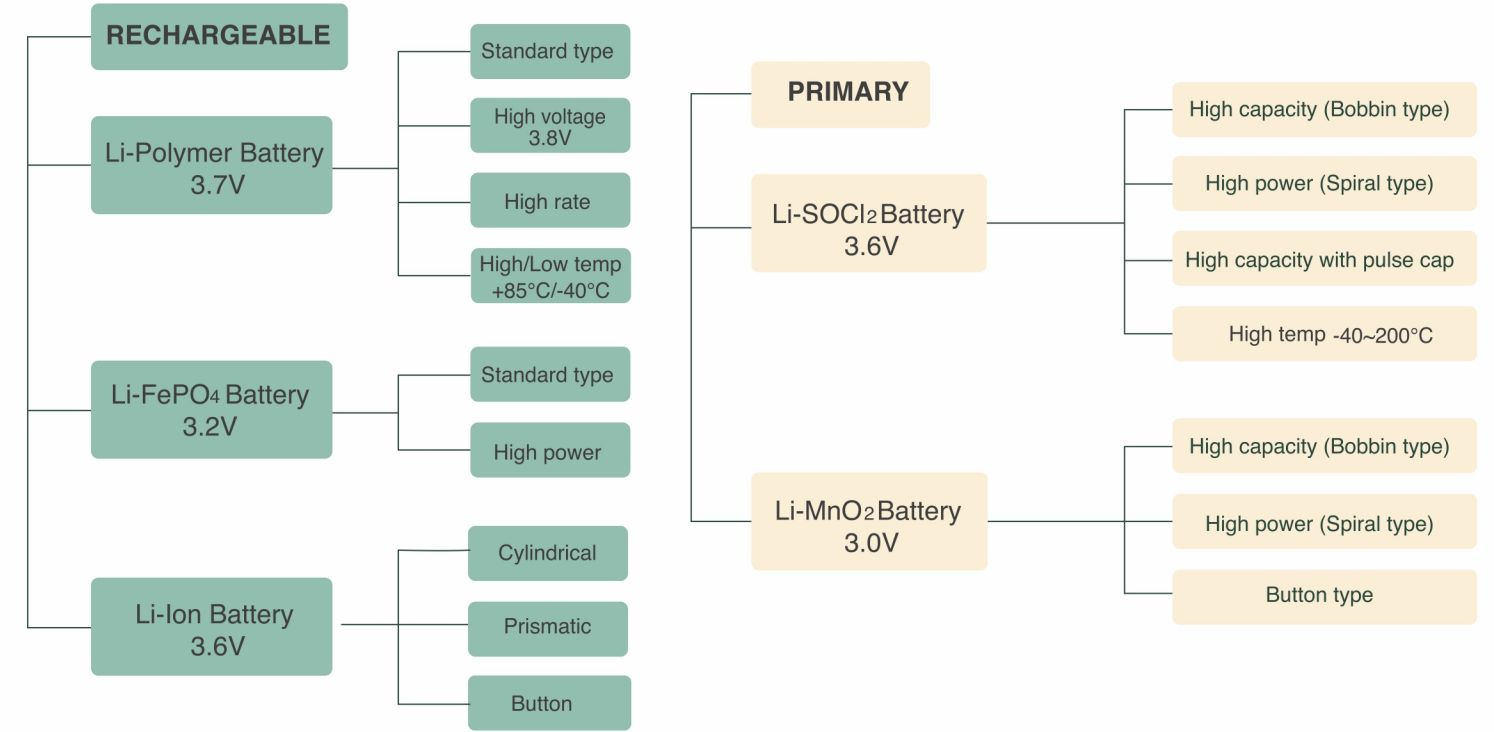



IEC

Application



Product Map



 Customized battery pack assembly is available per request.

Li-polymer Battery 3.7V

Features:

- ❖ High energy density
- ❖ Flexible in size
- ❖ High discharge rate from 2C to 30C
- ❖ Wide temperature range from -40°C to 85°C
- ❖ Superior storage characteristics
- ❖ Long cycle life of more than 500 cycles
- ❖ Environmentally friendly



Application:



Li-polymer Battery 3.7V

Model	Typical capacity (mAh)	Nominal Voltage (V)	Thickness (mm)	Width (mm)	Length (mm)	Approx. Weight (g)
331012	15	3.7	3.5	10.5	13.0	0.3
251515	20	3.7	2.7	15.5	16.0	0.4
401120	60	3.7	4.2	11.5	21.0	1.2
481417	65	3.7	5.0	14.5	18.0	1.3
331030	70	3.7	3.5	10.5	31.0	1.2
451220	70	3.7	4.7	12.5	21.0	1.4
500937	110	3.7	5.2	9.5	38.0	2.2
511422	110	3.7	5.3	14.5	23.0	2.2
302030	120	3.7	3.2	20.5	31.0	2.4
282028	125	3.7	3.0	20.5	29.0	2.5
451230	138	3.7	4.7	12.5	31.0	2.8
401730	150	3.7	4.2	17.5	31.0	3.0
302525	150	3.7	3.2	25.5	26.0	3.0
601622	160	3.7	6.2	16.5	23.0	3.2
402025	160	3.7	4.2	20.5	26.0	3.2
301646	185	3.7	3.2	16.5	47.0	3.7
552024	200	3.7	5.7	15.5	25.0	4.0
751524	220	3.7	7.7	25.5	25.0	4.4
302535	220	3.7	3.2	20.5	36.0	4.4
402035	230	3.7	4.2	23.5	36.0	4.6
402332	255	3.7	4.2	20.5	33.0	5.1
652030	260	3.7	6.7	25.5	31.0	4.4
382530	260	3.7	4.0	20.5	31.0	5.2
402040	280	3.7	4.2	19.5	41.0	5.6
501935	300	3.7	5.2	20.5	36.0	6.0
602030	300	3.7	6.2	20.5	31.0	6.0
502035	300	3.7	5.2	20.5	36.0	6.0
502530	300	3.7	5.2	25.5	31.0	6.0
701438	320	3.7	7.2	14.5	39.0	6.4
451265	330	3.7	4.7	12.5	66.0	6.6
601839	350	3.7	6.2	18.5	40.0	7.0
602535	350	3.7	6.2	25.5	36.0	7.0
422441	350	3.7	4.4	24.5	42.0	7.0

Model	Typical capacity (mAh)	Nominal Voltage (V)	Thickness (mm)	Width (mm)	Length (mm)	Approx. Weight (g)
452048	400	3.7	4.7	20.5	49.0	8.0
503030	400	3.7	5.2	30.5	31.0	8.0
502238	410	3.7	5.2	22.5	39.0	8.2
801930	450	3.7	8.2	19.5	31.0	9.0
402060	450	3.7	4.2	20.5	61.0	9.0
552535	450	3.7	5.7	25.5	36.0	9.0
603030	500	3.7	6.2	30.5	31.0	10.0
503035	500	3.7	5.2	30.5	36.0	10.0
333448	500	3.7	3.5	34.5	49.0	10.0
264046	500	3.7	2.8	40.5	47.0	10.0
602045	550	3.7	6.2	20.5	46.0	11.0
503040	550	3.7	5.2	30.5	41.0	11.0
601663	600	3.7	6.2	16.5	64.0	12.0
802040	600	3.7	8.2	20.5	41.0	12.0
602248	600	3.7	6.2	22.5	49.0	12.0
442258	600	3.7	4.6	22.5	59.0	12.0
802243	700	3.7	8.2	22.5	44.0	14.0
902830	700	3.7	9.2	28.5	31.0	14.0
503048	700	3.7	5.2	30.5	49.0	14.0
453445	700	3.7	4.7	34.5	46.0	14.0
782245	720	3.7	8.0	22.5	46.0	14.0
802540	800	3.7	8.2	25.5	41.0	14.4
653035	800	3.7	6.7	30.5	36.0	16.0
681966	880	3.7	7.0	19.5	67.0	16.0
803040	950	3.7	8.2	30.5	41.0	17.6
902538	980	3.7	9.2	25.5	39.0	19.6
102737	1000	3.7	10.2	27.5	38.0	20.0
103035	1000	3.7	10.2	30.5	36.0	20.0
703048	1000	3.7	7.2	30.5	49.0	20.0
102730	1050	3.7	10.2	27.5	31.0	21.0
603448	1050	3.7	6.2	34.5	49.0	21.0
523450	1050	3.7	5.4	34.5	51.0	21.0
783045	1150	3.7	8.0	30.5	46.0	23.0
503460	1150	3.7	5.2	34.5	61.0	23.0
503759	1150	3.7	5.2	37.5	60.0	23.0

Model	Typical capacity (mAh)	Nominal Voltage (V)	Thickness (mm)	Width (mm)	Length (mm)	Approx. Weight (g)
903042	1200	3.7	9.2	30.5	43.0	24.0
803443	1200	3.7	8.2	34.5	44.0	24.0
112840	1300	3.7	11.2	28.5	41.0	26.0
103048	1400	3.7	10.2	30.5	49.0	28.0
854040	1500	3.7	8.7	40.5	41.0	30.0
454261	1520	3.7	4.7	42.5	62.0	30.4
355771	1600	3.7	3.7	57.5	72.0	32.0
853560	1750	3.7	8.7	35.5	61.0	35.0
113442	1850	3.7	11.2	34.5	43.0	37.0
804450	1850	3.7	8.2	44.5	51.0	37.0
103450	2000	3.7	10.2	34.5	51.0	36.0
802680	2030	3.7	8.2	26.5	81.0	40.6
754060	2200	3.7	7.7	40.5	61.0	44.0
604367	2200	3.7	6.2	43.5	68.0	44.0
104050	2300	3.7	10.2	40.5	51.0	46.0
6034100	2450	3.7	6.2	34.5	101.0	49.0
103759	2550	3.7	10.2	37.5	60.0	51.0
844069	2600	3.7	8.6	40.5	70.0	52.0
635572	2900	3.7	6.5	55.5	73.0	58.0
4952102	3200	3.7	5.1	52.5	103.0	64.0
8032117	3400	3.7	8.2	32.5	118.0	68.0
605590	3400	3.7	6.2	55.5	91.0	68.0
805085	3800	3.7	8.2	50.5	86.0	76.0
984962	4000	3.7	10.0	49.5	63.0	80.0
805080	4000	3.7	8.2	50.5	81.0	80.0
6558110	4200	3.7	6.7	58.5	111.0	84.0
6845123	4550	3.7	7.0	45.5	124.0	91.0
7052101	4600	3.7	7.2	52.5	102.0	92.0
7745120	5000	3.7	7.9	45.5	121.0	100.0
105085	5000	3.7	10.2	50.5	86.0	100.0
469094	5400	3.7	4.8	90.5	95.0	108.0
8550105	6000	3.7	8.7	50.5	106.0	120.0
61100100	6800	3.7	6.3	100.5	101.0	136.0
7080109	7500	3.7	7.2	80.5	110.0	150.0
6090129	8300	3.7	6.2	90.5	130.0	166.0
1075130	10000	3.7	10.2	75.5	131.0	200.0

Li-FePO₄ Battery 3.2V

Features:

- ◆ More than 2000 times cycle life
- ◆ High safety Li-FePO₄ material
- ◆ Wide operation temperature range
- ◆ Modular design, allocation flexible, multiple modules in parallel to achieve higher capacity.
- ◆ Leak proofing structure, non-pollution, green product.
- ◆ Maintenance free.

Application:



Li-FePO₄ Battery 3.2V

CELL	Model	Voltage (V)	Capacity (mAh)	Dimension (mm)		Weight (g)	Discharge Rate	Internal Resistance	Type
				Diameter	Height				
CELL	LIP18650	3.2	1600	18.15	65.2	42	3C	45	Energy
	LIP18650	3.2	1800	18.15	65.2	42	3C	45	Energy
	LIP26650	3.2	3600	26.15	65.6	87	3C	30	Energy
	LIP26650	3.2	3800	26.15	65.6	87	3C	30	Energy

PACK	Model	Voltage (V)	Capacity (Ah)	Dimension (mm)			Weight (kg)	Charge Rate	Cont. Discharge Rate	Terminal
				Length	Height	Height				
PACK	LIP1280036	12.8	3.6	134±1	65±1	60±2	0.5±0.1	0.2C	0.5C-1C	T1/T2
	LIP1280090	12.8	9	151±1	65±1	93±2	1.1±0.1	0.2C	0.5C-1C	T1/T2
	LIP1280150	12.8	15	151±1	98±1	94±2	1.8±0.1	0.2C	0.5C-1C	T1/T2
	LIP1280180	12.8	18	81±1	76.5±1	168±2	2.1±0.1	0.2C	0.5C-1C	M5
	LIP1280270	12.8	27	174±1	165±1	125±2	3.2±0.2	0.2C	0.5C-1C	φ5.5
	LIP1280300	12.8	30	181±1	76.5±1	168±2	3.4±0.1	0.2C	0.5C-1C	φ5.5
	LIP1280420	12.8	42	195±1	165±2	175±2	4.5±0.5	0.2C	0.5C-1C	M6
	LIP1280400	12.8	40	194±2	130±2	158±2	5.2±0.5	0.2C	0.5C-1C	φ5.5

PACK	Model	Voltage (V)	Capacity (Ah)	Dimension (mm)			Weight (kg)	Charge Rate	Cont. Discharge Rate	Housing
				Length	Height	Height				
PACK	LIP18650-14-8S	25.6	1.4	80	40	70	0.43	0.2C	0.5C-1C	PVC
	LIP18650-14-4S	12.8	1.4	38	38	71	0.18	0.2C	0.5C-1C	PVC
	LIP5120500	51.2	50	375±5	482.6±5	133.2±3	30	0.2C	0.5C-1C	3U sheet metal
	LIP26650-36-4S45P	12.8	162	330±3	327±3	160±2	21.2	0.2C	0.5C-1C	Sheet metal
	LIP5120680	51.2	68	528±5	420±3	130±5	35	0.2C	0.5C-1C	Sheet metal

Li-Ion Battery 3.6V

	Model	Nominal Voltage (V)	Nominal Capacity (mAh)	Internal Impedance (mΩ)	Diameter (mm)	Height (mm)	Approx. Weight (g)
Cylindrical	ICR10440	3.7	320	110	10.3	44	12
	ICR14500	3.7	800	80	14.5	51	20
	ICR16340	3.7	700	80	16.8	34	17
	ICR18500	3.7	1500	80	18.3	50.2	33
	ICR18650	3.7	2200	60	18.5	65.2	46
	ICR18650	3.7	2600	60	18.5	65.2	47
	ICR18650	3.7	3200	60	18.5	62.5	47
	ICR18650	3.7	3350	60	18.5	65.2	47
	ICR21700	3.7	5000	100	21.5	70.2	76
Coin Cell	ICR2032	3.6	40	/	20	3.2	3.1
	ICR1254	3.6	65	/	12	5.4	2
	ICR3048	3.6	280	/	30	4.8	9.4
	ICR1654	3.6	120	/	16	5.4	3.4
	Model	Nominal Voltage (V)	Nominal Capacity (mAh)	Cons./Peak current	Diameter (mm)	Height (mm)	Approx. Weight (g)
Power Type	ICR18650	3.7	1500	3C/5C	18.5	65.2	46
	ICR18650	3.7	2600	3C/5C	18.5	65.2	47
	ICR18650	3.7	3200	3C/5C	18.5	65.2	47
	ICR21700	3.7	4000	3C/5C	21.5	70.2	76
	ICR18650	3.7	1500	10C	18.5	65.2	47
	ICR26650	3.7	3400	10C	26.3	65.2	92

Above are the popular models, for more models, please contact us.

Features:

- ❖ High operating voltage
- ❖ Wide operating temperature range -20°C to 60°C
- ❖ Low self-discharge rate and long cycle life
- ❖ High energy density
- ❖ High power rate
- ❖ No memory effect

Application:

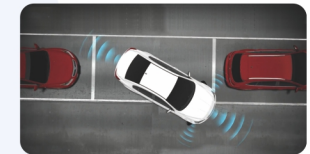
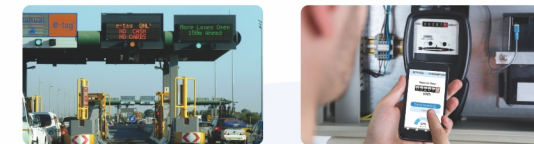


Li-SOCl₂ Battery 3.6V

Features:

- ❖ High and stable operating voltage platform
- ❖ Wide temperature range from -55°C to +85°C
- ❖ Laser sealing structure, no leakage
- ❖ High energy density
- ❖ Up to 10 years shelf life, self discharge rate is less than 1% per year

Application:



Li-SOCl₂ Battery 3.6V

Energy Type	Model	Size	Nominal Voltage (V)	Nominal Capacity (mAh)	Standard Discharge Current(mA)	Max. Discharge Current (mA)		Diameter (mm)	Height (mm)	Approx. Weight(g)
						Continuous	Pulse			
Energy Type	ER10450	AAA	3.6	800	1.0	5	30	10.2	46.2	8
	ER14250	1/2AA	3.6	1200	0.5	40	80	14.5	25.0	10
	ER14335	2/3AA	3.6	1650	1.3	75	150	14.5	33.0	13
	ER14505	AA	3.6	2400	2.0	100	200	14.5	49.5	20
	ER17335	2/3A	3.6	2100	2.0	100	200	17.0	33.5	21
	ER17505	A	3.6	3400	2.0	100	200	17.5	50.5	25
	ER18505	A	3.6	4000	2.0	120	200	18.8	50.5	30
	ER26500	C	3.6	8500	3.0	130	300	26.5	50.0	55
	ER34615	D	3.6	19000	2.0	230	400	34.0	61.5	115
	ER341245	DD	3.6	35000	2.0	450	1000	34.0	124.5	200
	ER9V	—	10.8	1200	1.0	35	100	16.9*26.0*48.8		40
Power Type	ER14250M	1/2AA	3.6	750	4.0	120	250	14.5	25.0	10
	ER14335M	2/3AA	3.6	1200	1.0	200	500	14.5	33.5	14
	ER14505M	AA	3.6	1800	10.0	500	1000	14.5	49.5	22
	ER17335M	2/3AA	3.6	1700	4.0	300	1000	17.0	33.5	20
	ER18505M	A	3.6	3200	10.0	500	1500	18.5	50.5	30
	ER26500M	C	3.6	6500	10.0	1000	2000	26.5	50.0	55
ER34615M	D	3.6	13000	10.0	2000	3000	34.0	61.5	118	

Li-SOCl₂ Battery 3.6V (High-Temp)

Features:

- ◆ High operating voltage, stable during most of the application lifetime.
- ◆ Wide Temperature Range from -40°C to +200°C.
- ◆ Vibration & shock proof design
- ◆ Low self discharge rate is less than 1% per year.
- ◆ Application in oil & gas downhole measurement, tunnel inspection instruments, tracking system, sensors.

Application:



Model	Nominal Voltage (V)	Nominal capacity (Ah)	Diameter(mm)	Length(mm)	Temperature Range(°C)
AKDD1508A5TS/Tensor MWD	28.8	28	37.5±1.0	1140±2.0	150°C-200°C
AKDD1508A5QD/QDT Tensor MWD	28.8	28	37.5±1.0	1219.2±2.0	150°C-200°C
AKDD15010A5AP/APS MWD	36.0	28	Max. 37.2	1443±2.0	150°C-180°C
AKCC15006A5SD/6CCSONDEX	21.6	10	27.0±0.3	600±2.0	150°C-180°C

Li-SOCl₂ Battery 3.6V (High-Temp)

Model	Rate Capability	Cell size	Nominal Voltage (V)	Nominal capacity (Ah)	Rated Current (mA)	Max. current (mA)	Diameter (mm)	Height (mm)	Weight (g)	Working temperature (°C)	Part number
ER10450S	Low Rate	AAA	3.6	0.7	15	25	10.8	46.0	10	-40~150	10-46-LR
ER14250S	High Rate	1/2AA	3.6	0.8	20	40	14.5	25.0	10	-40~150	14-25-HR
ER14505S	High Rate	AA	3.6	1.6	50	100	14.5	49.5	18	-40~150	14-50-HR
ER14505S-165	High Rate	AA	3.6	1.6	50	100	14.5	50.5	18	-40~165	14-50-165-HR
ER14505S-200	High Rate	AA	3.6	1.2	50	100	14.5	49.5	18	+70~200	14-50-200-HR
ER17335S	High Rate	2/3A	3.6	1.6	50	100	16.8	32.8	20	-40~150	17-33-HR
ER17505S	High Rate	A	3.6	2.5	50	100	16.8	49.5	25	-40~150	17-50-HR
ER17505S-165	High Rate	A	3.6	2.5	50	100	16.8	49.5	25	-40~165	17-50-165-HR
ER18505S	High Rate	A	3.6	3.0	50	100	18.0	50.5	30	-40~150	18-50-HR
ER17505S-165-2P	High Rate	2A	3.6	5.0	150	300	17.5	102.0	50	-40~165	18-102-165-HR
ER26500S	High Rate	C	3.6	6.0	100	200	24.5	48.5	50	-40~150	25-49-HR
ER26500S-165	High Rate	C	3.6	6.0	100	200	24.5	51.0	50	-40~165	25-51-165-HR
ER26500S	High Rate	C	3.6	6.0	230	450	25.4	50.5	60	-40~150	26-50-HR
ER32615S	High Rate	D	3.6	12.0	500	1000	32.2	61.5	108	-40~150	32-61-HR
ER26760S	Moderate Rate	3/2C	3.6	10.5	100	200	25.4	76.0	85	-40~150	26-76-MR
ER21102S	Moderate Rate	Slim CC	3.6	8.6	150	300	20.0	102.8	75	-40~150	20-102-MR
ER21102S	Moderate Rate	Slim CC	3.6	9.5	150	300	20.6	98.0	75	-40~150	21-98-HR
ER26102S	High Rate	CC	3.6	11.0	350	700	24.5	102.8	105	-40~150	25-102-HR
ER26102S-165	High Rate	CC	3.6	11.0	500	1000	25.4	102.8	105	-40~165	26-102-165-HR
ER26102S-180	Moderate Rate	CC	3.6	11.0	200	400	25.4	102.8	105	+50~180	26-102-180-MR
ER321250S	Moderate Rate	DD	3.6	28.0	500	1200	32.7	126.5	205	-40~150	33-127-MR
ER321250S	High Rate	DD	3.6	28.0	500	2000	32.0	130.5	210	-40~150	32-130-HR
ER321250S	Moderate Rate	DD	3.6	28.0	600	1200	32.0	126.5	198	-40~150	32-127-MR
ER321250S	High Rate	DD	3.6	28.0	500	2000	32.7	130.5	210	-40~150	33-130-HR
ER321250S-180	High Rate	DD	3.6	24.0	500	1000	32.7	130.5	210	+50~180	33-130-180-HR
ER3080S	High Rate	3/2D	3.6	18.0	600	1500	30.0	78.0	125	-40~150	30-78-HR
ER30100S	High Rate	5/3D	3.6	22.0	600	1500	30.0	98.0	150	-40~150	30-98-HR
ER49800S	Moderate Rate	TSD/E	3.6	36.0	500	1800	48.4	80.0	340	-40~150	48-80-MR

Li-MnO₂ Battery 3.0V



Features:

- ◆ Low self-discharge rate and long shelf life, 2% per year.
- ◆ Stable discharge characteristics.
- ◆ Applicable in a wide temperature range. Operational temperature range from -20°C to +60°C.
- ◆ Low leakage rate.

Application:

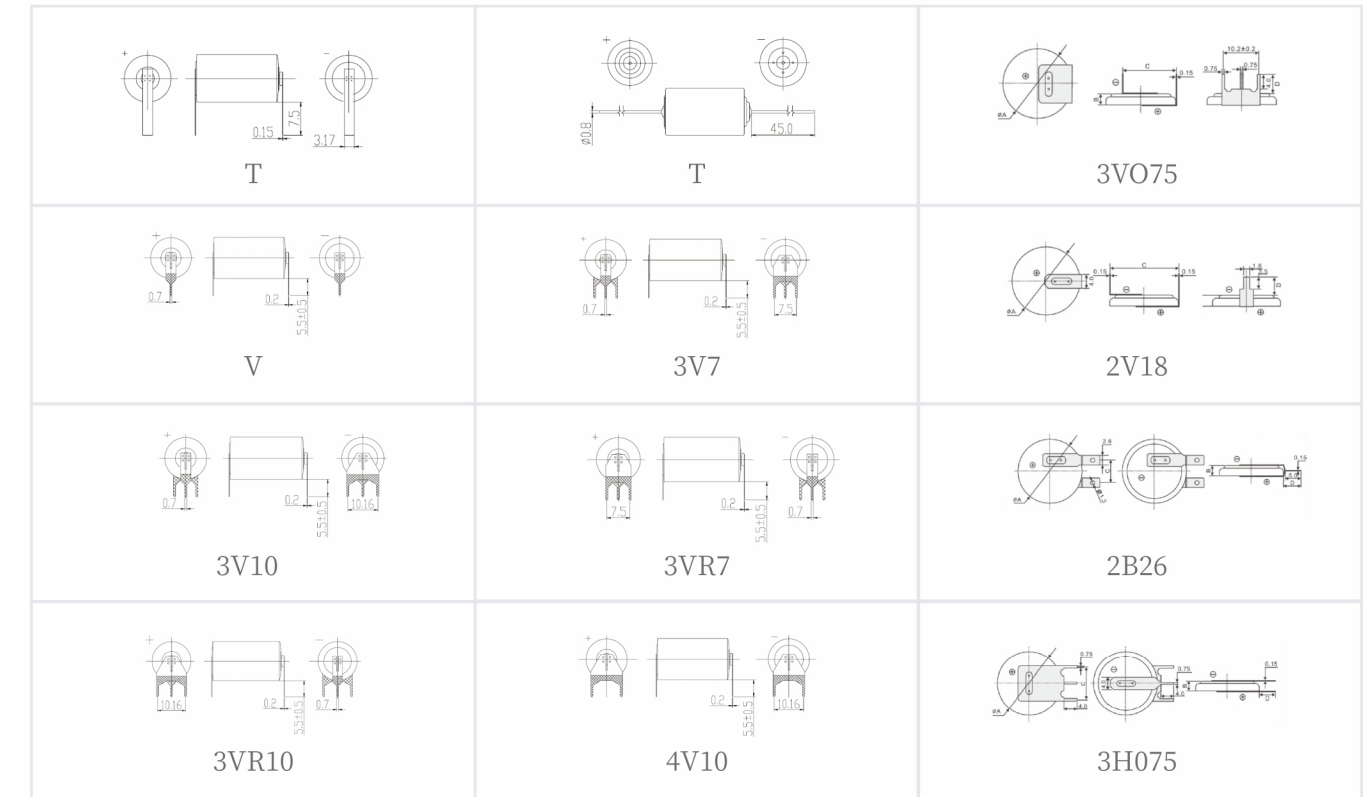


Button Cell	Model	Size	Nominal Voltage (V)	Nominal Capacity (mAh)	Standard Discharge Current (mA)	Max. Discharge Current(mA)		Diameter (mm)	Height (mm)	Approx. Weight(g)
						Continuous	Pulse			
	CR2032	/	3.0	230	0.4	3	20	20.0	3.2	3.0
	CR2330	/	3.0	250	0.4	3	20	23.0	3.0	4.0
	CR2354	/	3.0	550	0.4	3	20	23.0	5.4	6.3
	CR2430	/	3.0	300	0.4	3	20	24.5	3.0	4.2
	CR2450	/	3.0	600	0.4	3	20	24.5	5.0	6.2
	CR2477	/	3.0	1000	0.4	3	30	24.5	7.7	10.2

Li-MnO₂ Battery 3.0V

	Model	Size	Nominal Voltage (V)	Nominal Capacity (mAh)	Standard Discharge Current (mA)	Max. Discharge Current(mA)		Diameter (mm)	Height (mm)	Approx. Weight(g)
						Continuous	Pulse			
Button Cell	CR927	/	3.0	30	0.1	1	5	9.5	2.7	0.6
	CR1025	/	3.0	30	0.1	1	5	10.0	2.5	0.7
	CR1216	/	3.0	25	0.1	1	5	12.5	1.6	0.6
	CR1220	/	3.0	40	0.1	1	5	12.5	2.0	0.7
	CR1225	/	3.0	50	0.1	1	5	12.5	2.5	0.8
	CR1616	/	3.0	50	0.1	2	10	16.0	1.6	1.0
	CR1620	/	3.0	70	0.2	2	10	16.0	2.0	1.2
	CR1632	/	3.0	120	0.2	2	15	16.0	3.2	1.7
	CR1654	/	3.0	210	0.2	3	20	16.0	5.4	2.9
	CR2016	/	3.0	75	0.2	2	15	20.0	1.6	1.6
	CR2025	/	3.0	150	0.4	3	20	20.0	2.5	2.5
	Energy Type	CR14250BL	1/2AA	3.0	900	0.5	7	70	14.5	25
CR14335BL		2/3AA	3.0	1100	0.5	8	80	14.5	33.5	16
CR14505BL		AA	3.0	1800	0.5	10	100	14.5	50.5	22
CR17335BL		2/3A	3.0	1800	1	10	100	17	33.5	22
CR17450BL		-	3.0	2400	1	15	150	17	45	28
Power Type	CR14250	1/2AA	3.0	650	1	800	1500	14.50	25.00	10
	CR14335	2/3AA	3.0	900	1	1000	2000	14.50	33.50	14
	CR14505	AA	3.0	1500	1	2000	3000	14.50	50.50	21
	CR2	-	3.0	800	5	1000	2000	15.50	27.00	13
	CR17335	2/3A	3.0	1500	1	1000	3000	17.00	33.50	20
	CR17450	-	3.0	2200	1	1500	3500	17.00	45.00	26
	CR17505	A	3.0	2500	10	1500	3500	17.00	50.50	30
	CR18505	-	3.0	2800	1	2000	3000	18.00	50.50	35
	CR26500	C	3.0	5500	10.0	2000	4000	26.2	50.0	62
	CR34615	D	3.0	10000	10	2000	3000	34.00	61.50	125
2CR5	-	6.0	1500	1	1500	3500	34.0*17.0*45.0		43	

Battery terminals



For more details, please contact Akku Tronics.